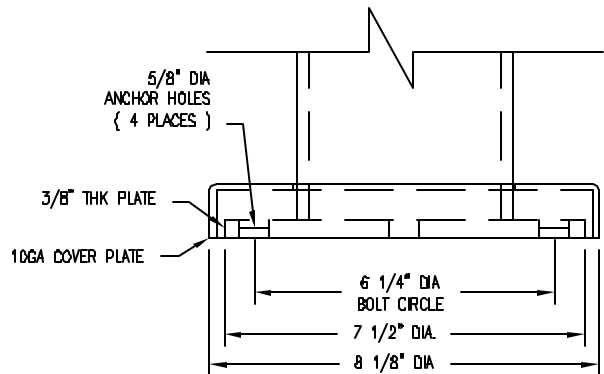
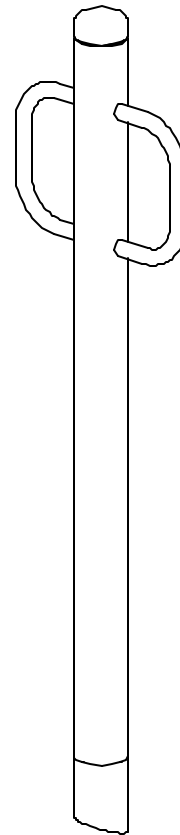


S-1 EMBEDDED



S-2 SURFACE MT

**NOTES**

- 1.) STL MEMBERS COATED W/ ZINC RICH EPOXY THEN FINISHED W/ POLYESTER POWDER COATING.
- 2.) 1/2" X 3 3/4" EXPANSION ANCHOR BOLTS PROVIDED FOR S-2 OPTION.

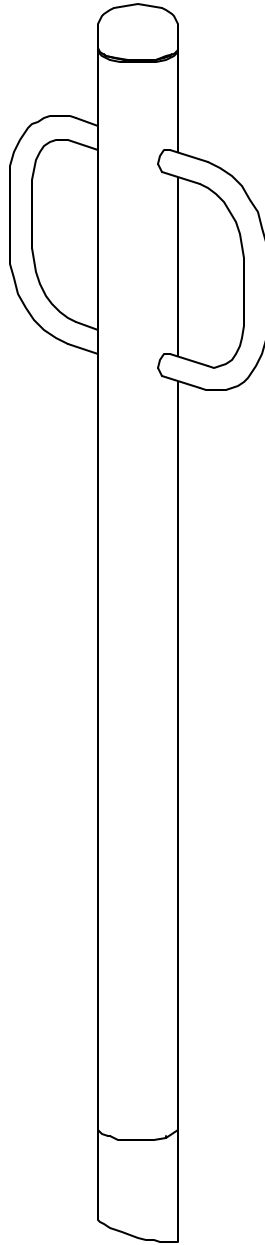


**DuMor, inc.**

P.O. Box 142 Mifflintown, PA 17059-0142

SCALE : NONE  
 DATE DRAWN : 10/26/05  
 DRAWN BY : AWH  
 DATE REV. : 1/19/07  
 REV. BY : JSB

TITLE : BOLLARD		SHEET 1 OF 2	
REV. B	DRAWING NUMBER 401-36-2		



NOTE:

1. MOUNT AND ANCHOR AS SPECIFIED.



DuMor, inc.

P.O. Box 142 Mifflintown, PA 17059-0142

SCALE :	NONE
DATE DRAWN :	10/26/05
DRAWN BY :	AWH
DATE REV. :	1/19/07
REV. BY :	JSB

TITLE :	BOLLARD		
REV.	DRAWING NUMBER		SHEET
B	401-36-2		2 OF 2