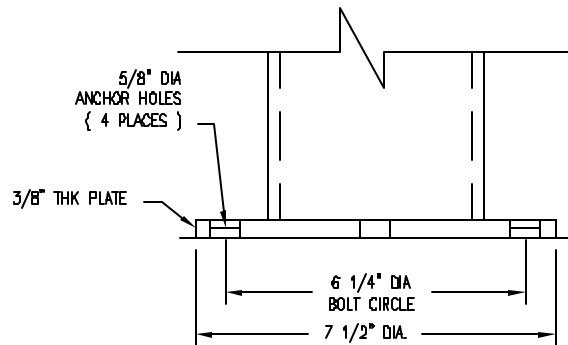
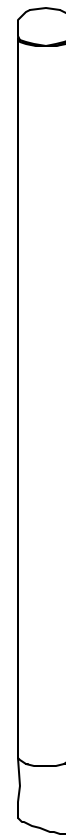


S-1 EMBEDDED



S-2 SURFACE MT

NOTES

- 1.) STL MEMBERS COATED W/ ZINC RICH EPOXY THEN FINISHED W/ POLYESTER POWDER COATING.
- 2.) 1/2" X 3 3/4" EXPANSION ANCHOR BOLTS PROVIDED FOR S-2 OPTION.

DuMor, inc.
P.O. Box 142 Mifflintown, PA 17059-0142

SCALE : NONE
DATE DRAWN : 10/27/06
DRAWN BY : AWH
DATE REV. : 01/18/07
REV. BY : ESS

TITLE : BOLLARD		SHEET 1 OF 2	
REV. B	DRAWING NUMBER 400-36		



NOTE:

1. MOUNT AND ANCHOR AS SPECIFIED.



DuMor, inc.

P.O. Box 142 Mifflintown, PA 17059-0142

SCALE :	NONE	TITLE :	BOLLARD	
DATE DRAWN :	10/26/05	REV.	DRAWING NUMBER	SHEET
DRAWN BY :	AWH	B	400-36	2 OF 2
DATE REV. :	01/18/07			
REV. BY :	ESS			