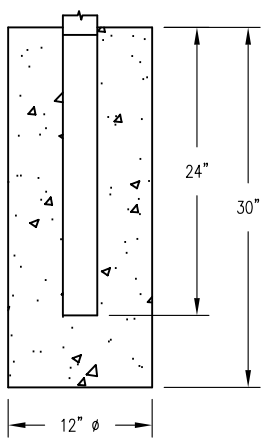
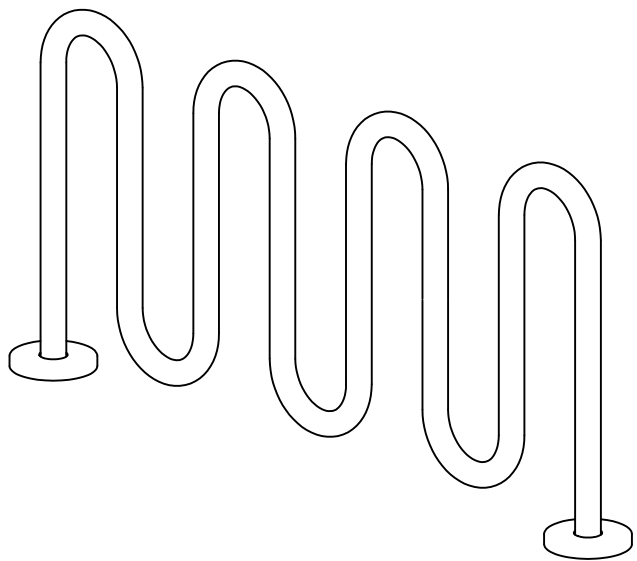


* S-2 SURFACE MOUNT *
(SEE NOTES)



S-1 EMBEDMENT

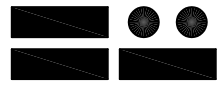


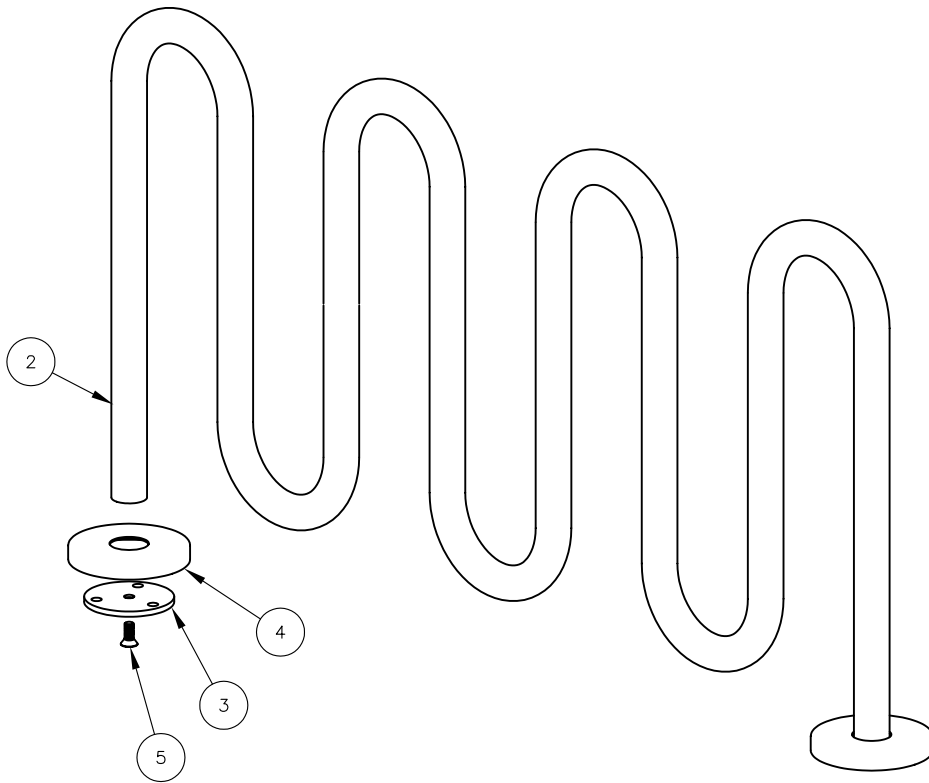
FINISH OPTIONS

- HOT DIPPED GALVANIZED (VISIBLE VENT HOLES)
- COATED W/ ZINC RICH EPOXY THEN FINISHED W/ POLYESTER POWDER COATING.

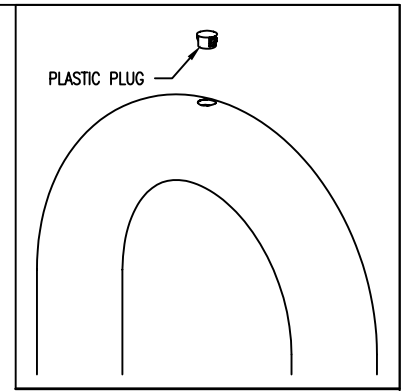
NOTES:

- 1.) 1/2" X 3 3/4" EXPANSION ANCHOR BOLTS PROVIDED FOR OPTION S-2.
 - 2.) PLUGS PROVIDED FOR VISIBLE VENT HOLES. (HOT DIPPED GALV. ONLY)
- * UPCHARGE APPLIES TO SUPPORT OPTION - CONSULT YOUR LOCAL REPRESENTATIVE.

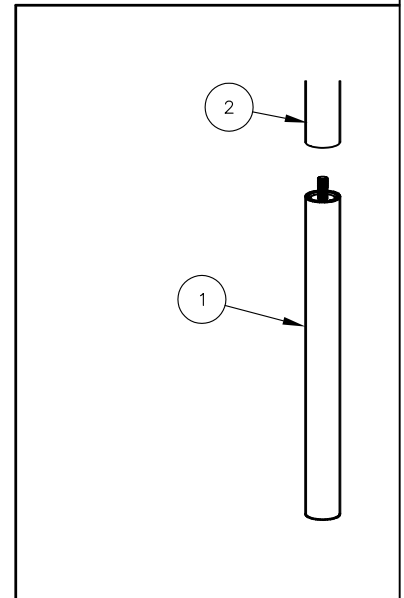
 DuMor, inc. P.O. Box 142 Mifflintown, PA 17059-0142	SCALE :	NONE	TITLE :		BIKE RACK	
	DATE DRAWN :	2/10/99	REV.	DRAWING NUMBER	130-40	SHEET
	DRAWN BY :	CDC	F			1 OF 2
	DATE REV. :	2/29/12				
	REV. BY :	JSB				



S-2 SURFACE MOUNT OPTION



HOT-DIPPED GALV. BIKE RACK ONLY



S-1 EMBEDMENT OPTION

INSTALLATION FOR SURFACE MOUNT

STEP 1:

- USE 1 - PC. BIKE LOOP, SURFACE MOUNT (2)
- 2 - PCS. 3/8" THK SURFACE MOUNT PLATE (3)
- 2 - PCS. 10 GA X 8" DIA ANCHOR PLATE COVER (4)
- 2 - PCS. 5/8" X 1 1/2" SS FLT SKT HD CAP SCREW (5)

SLIDE 10 GA X 8" DIA ANCHOR COVER (4) OVER BIKE LOOP, SURFACE MOUNT (2) LEGS. ATTACH 3/8" THK. SURFACE MOUNT PLATE (3) TO BIKE LOOP, SURFACE MOUNT (2) USING HARDWARE (5).

STEP 2:

ANCHOR ACCORDINGLY.

INSTALLATION FOR PLASTIC PLUG HOT-DIPPED GALV ONLY

INSERT PLASTIC PLUG INTO HOLE ON TOP OF EACH LOOP

(S-1 OPTION)

(S-2 OPTION)

(S-2 OPTION)

(S-2 OPTION)

ITEM	QTY	PART NO	DESCRIPTION
1	2	0-130-06/S-1	EMBEDMENT EXTENSION
2	1	0-130-40/S-2	4 PEAK LOOP BIKE RACK FOR SURF MT
3	2	0-83-00-03	3/8" THK SURFACE MOUNT PLATE
4	2	0-83-00-04	10 GA X 8" DIA STL ANCHOR PLATE COVER
5	2	1-12-102	5/8" X 1 1/2" SS FLT SKT HD CAP SCR

DuMor, inc.
P.O. Box 142 Mifflintown, PA 17059-0142

SCALE : NONE
DATE DRAWN : 2/10/99
DRAWN BY : CDC
DATE REV. : 2/29/12
REV. BY : JSB

TITLE : BIKE RACK ASSEMBLY

REV. E	DRAWING NUMBER 130-40	SHEET 2 OF 2
--------	-----------------------	--------------