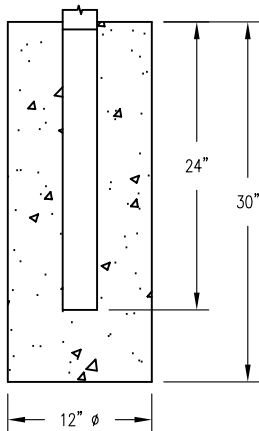
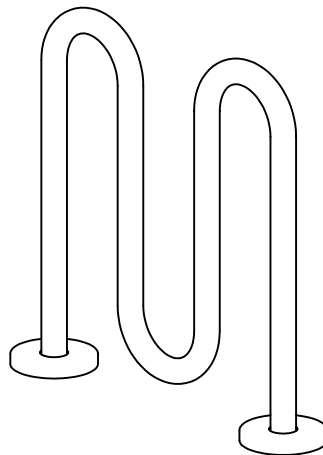


\*  S-2 SURFACE MOUNT \*

(SEE NOTES)



S-1 EMBEDMENT



FINISH OPTIONS

- HOT DIPPED GALVANIZED ( VISIBLE VENT HOLES )
- COATED W/ ZINC RICH EPOXY THEN FINISHED W/ POLYESTER POWDER COATING.

NOTES:

- 1.) 1/2" X 3 3/4" EXPANSION ANCHOR BOLTS PROVIDED FOR OPTION S-2.
  - 2.) PLUGS PROVIDED FOR VISIBLE VENT HOLES. ( HOT DIPPED GALV. ONLY )
- \* UPCHARGE APPLIES TO SUPPORT OPTION - CONSULT YOUR LOCAL REPRESENTATIVE.



**DuMor, inc.**

P.O. Box 142 Mifflintown, PA 17059-0142

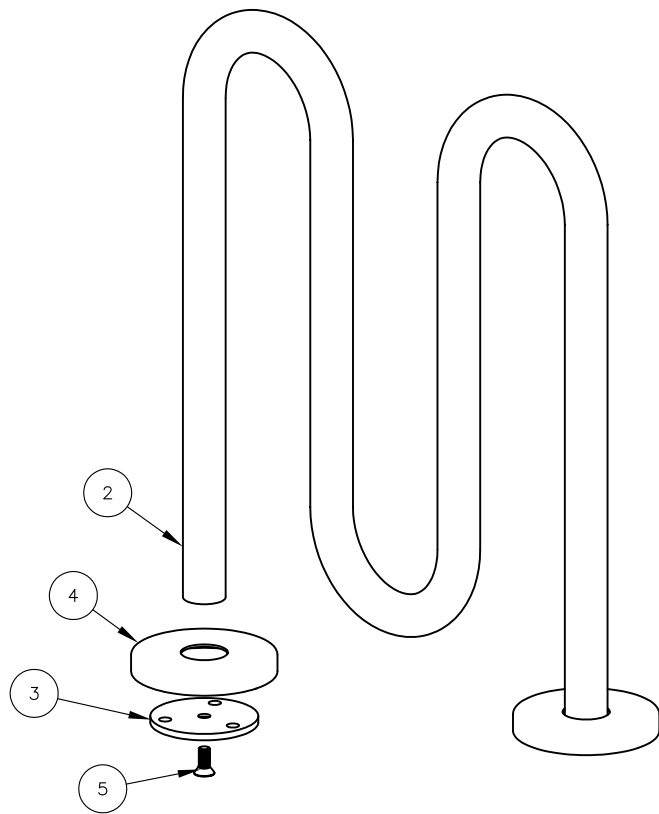
SCALE : NONE  
 DATE DRAWN : 1/6/11  
 DRAWN BY : JSB  
 DATE REV. : 2/28/12  
 REV. BY : JSB

TITLE : BIKE RACK

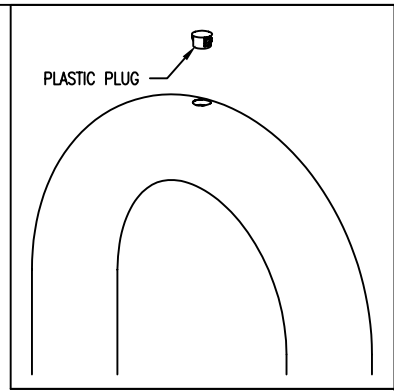
REV. B

DRAWING NUMBER 130-20

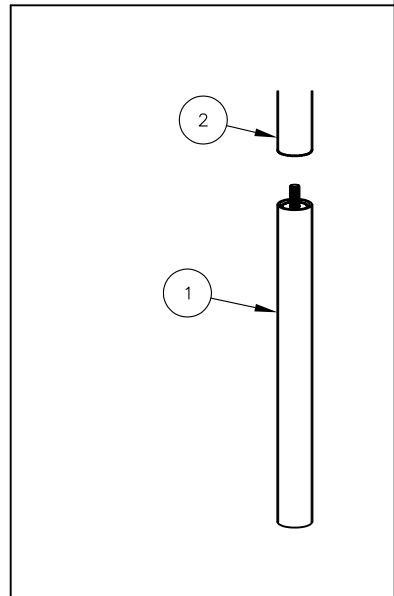
SHEET 1 OF 2



S-2 SURFACE MOUNT OPTION



HOT-DIPPED GALV. BIKE RACK ONLY



S-1 EMBEDMENT OPTION

INSTALLATION FOR SURFACE MOUNT

STEP 1:

- USE 1 - PC. BIKE LOOP, SURFACE MOUNT ( 2 )
  - 2 - PCS. 3/8" THK SURFACE MOUNT PLATE ( 3 )
  - 2 - PCS. 10 GA X 8" DIA ANCHOR PLATE COVER ( 4 )
  - 2 - PCS. 5/8" X 1 1/2" SS FLT SKT HD CAP SCREW ( 5 )
- SLIDE 10 GA X 8" DIA ANCHOR COVER ( 4 ) OVER BIKE LOOP, SURFACE MOUNT ( 2 ) LEGS. ATTACH 3/8" THK. SURFACE MOUNT PLATE ( 3 ) TO BIKE LOOP, SURFACE MOUNT ( 2 ) USING HARDWARE ( 5 ).

STEP 2:

ANCHOR ACCORDINGLY.

INSTALLATION FOR PLASTIC PLUG HOT-DIPPED GALV ONLY

INSERT PLASTIC PLUG INTO HOLE ON TOP OF EACH LOOP

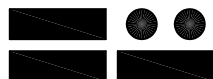
( S-1 OPTION )

( S-2 OPTION )

( S-2 OPTION )

( S-2 OPTION )

ITEM	QTY	PART NO	DESCRIPTION
1	2	0-130-06/S-1	EMBEDMENT EXTENSION
2	1	0-130-20/S-2	2 PEAK LOOP BIKE RACK FOR SURF MT
3	2	0-83-00-03	3/8" THK SURFACE MOUNT PLATE
4	2	0-83-00-04	10 GA X 8" DIA STL ANCHOR PLATE COVER
5	2	1-12-102	5/8" X 1 1/2" SS FLT SKT HD CAP SCR



**DuMor, inc.**

P.O. Box 142 Mifflintown, PA 17059-0142

SCALE : NONE

DATE DRAWN : 1/6/11

DRAWN BY : JSB

DATE REV. : 2/28/12

REV. BY : JSB

TITLE :

BIKE RACK ASSEMBLY

REV.  
B

DRAWING  
NUMBER

130-20

SHEET  
2 OF 2