

NOTE:

- 1.) 1/2" x 3 3/4" EXPANSION ANCHORS AND 2" PIPE CLAMPS PROVIDED (4 - PCS)

ANCHORING DETAIL

PARTS LIST

ITEM	QTY	PART NO	DESCRIPTION
1	2	0-71-00-08HG	BOLT PLATE FOR ALUM PLANK, HG
2	2	0-71-68-1A	2" X 10" X 66" ALUMINUM PLANK
3	3	0-71-80A	2" X 10" X 8' ALUM. PLANK ASSEMBLY
4	4	0-72-00-02	END SUPPORT FRAME
5	2	0-72-00-03	DIAGONAL BRACE
6	2	0-72-00-04	TOP ANGLE
7	4	0-72-00-05	SEAT PLATE
8	1	0-77-00-03HG	CENTER/END CHANNEL, HG
9	30	1-11-032	5/16" X 1" SS CGE BOLT
10	12	1-12-002	3/8" X 3" SS HEX HD CAP SCR
11	2	1-12-023	5/16" X 1" SS FLT SKT HD CAP SCR
12	2	1-12-039	3/8" X 5 1/2" SS HEX HD CAP SCR
13	4	1-17-003	1/2" X 3 3/4" SS EXPANSION ANCHOR
14	14	1-20-007	3/8" SS NYLON LOCKNUT
15	32	1-21-015	5/16" SS HEX NUT
16	4	1-21-016	1/2" SS HEX NUT
17	4	1-22-015	1/2" SS FLAT WASHER
18	32	1-22-017	5/16" SS FLAT WASHER
19	44	1-22-018	3/8" ID X 5/8" OD RUBBER WASHER
20	28	1-22-024	3/8" SS FLAT WASHER
21	4	5-48-492	2" RIGID PIPE CLAMP, 9/16" DIA HOLE, PLTD
22	30	5-48-702	ALUMINUM CLIP
23	8	5-48-859	2" BLACK PLASTIC PLUG

NOTES:

- 1.) DURING ASSEMBLY PROCEDURE;
DO NOT COMPLETELY TIGHTEN HARDWARE.
- 2.) THE ACTUAL PARTS WILL NOT BE NUMBERED.
NUMBERS ONLY APPLY TO DRAWING.
- 3.) UPON COMPLETION OF ASSEMBLY SQUARE
ALL COMPONENTS THEN TIGHTEN ALL HARDWARE.
- 4.) MOUNT AND ANCHOR AS SPECIFIED.

TOOLS REQ'D

- 1/2" WRENCH
3/4" WRENCH
9/16" WRENCH
1/2" MASONRY DRILL BIT
DRILL

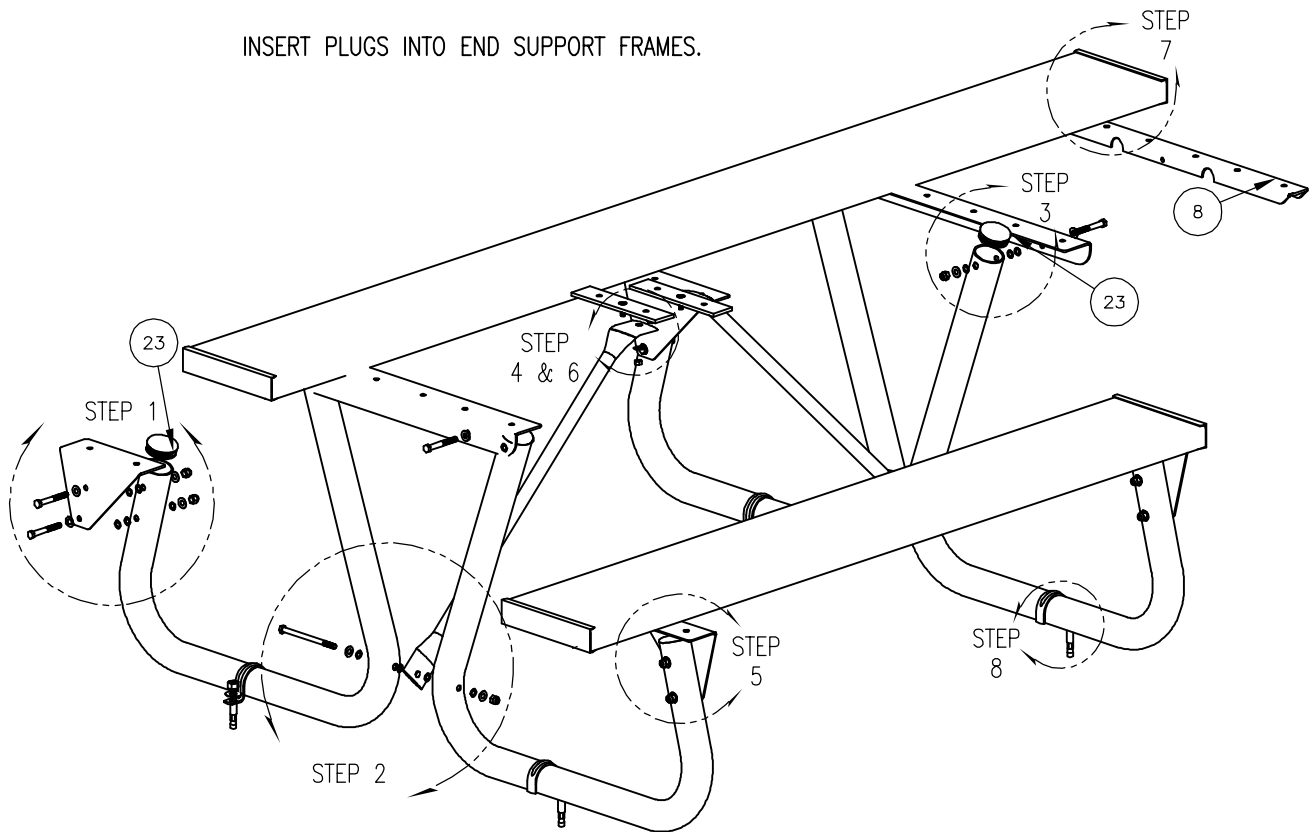
KITS PROVIDED

ITEM	QTY	PART NO	DESCRIPTION
24	1	K-72A	72 SER ALUM HARDWARE KIT
25	1	K-ALUMCLIP-32	ALUMINUM CLIP, 32 PCS
26	1	K-ANC-CLIP-16-4	2" SCH 40 CLAMP, 4 PCS
27	1	K-ANCO860-4	1/2" X 3 3/4" SS ANCHOR KIT (4PC)

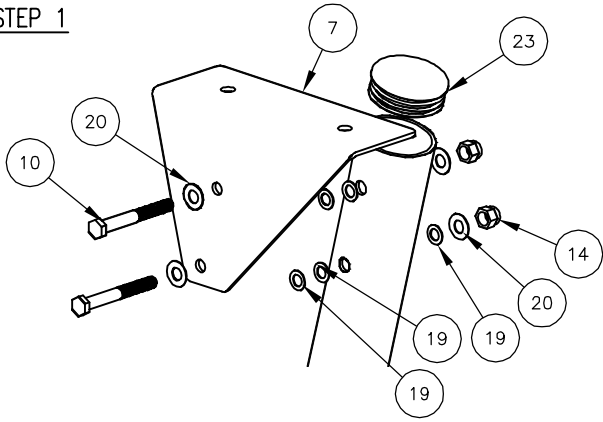
①

INSERT PLUGS INTO END SUPPORT FRAMES.

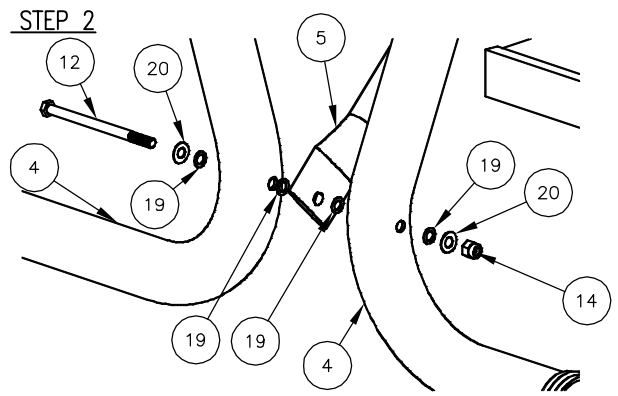
SEE SHEET 3 FOR
STEP DETAILS



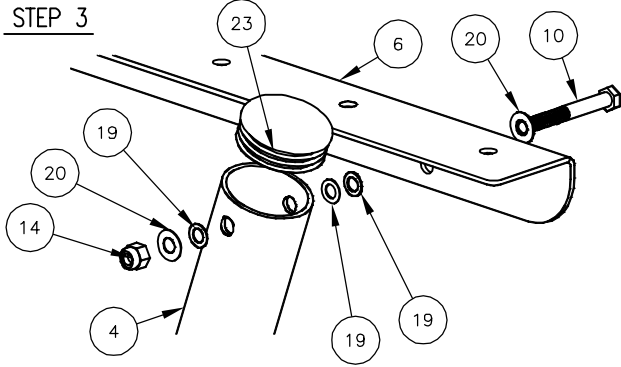
STEP 1



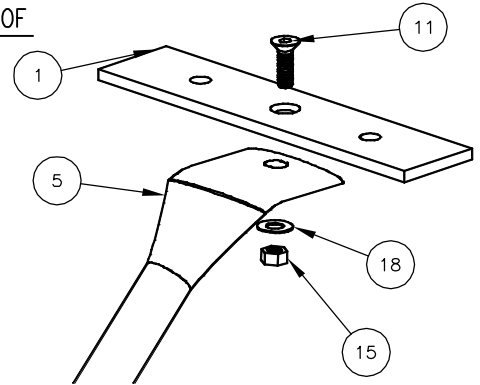
STEP 2



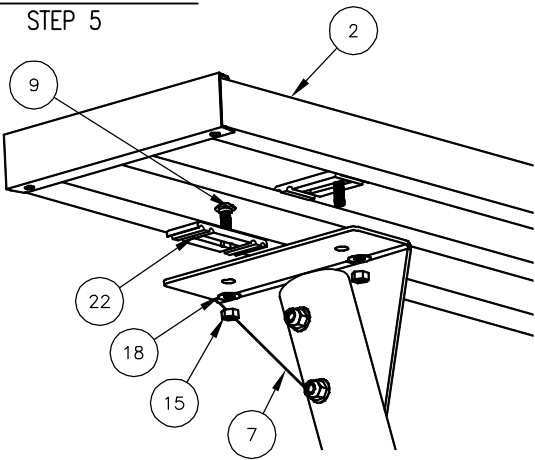
STEP 3



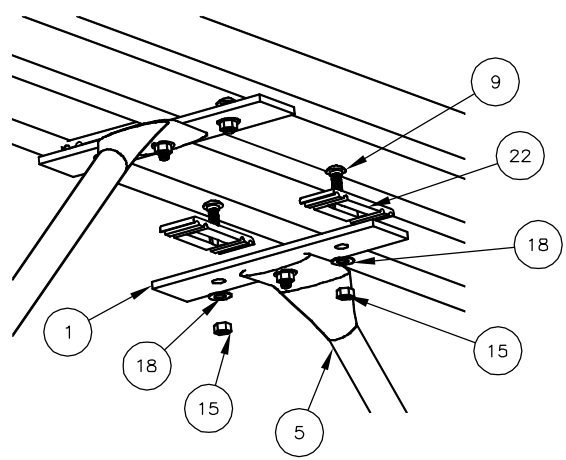
TYPICAL DETAIL OF STEP 4



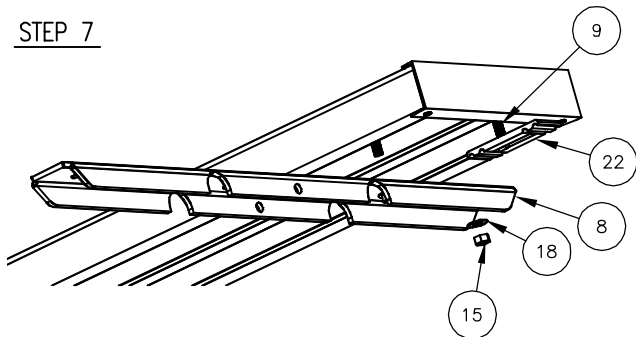
TYPICAL DETAIL OF STEP 5



STEP 6



STEP 7



STEP 8

