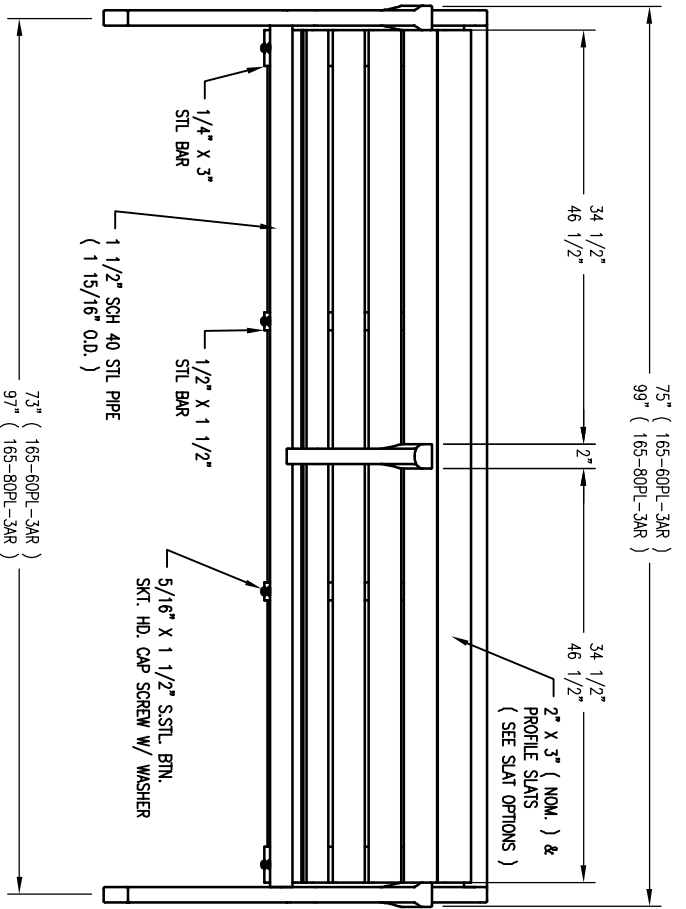
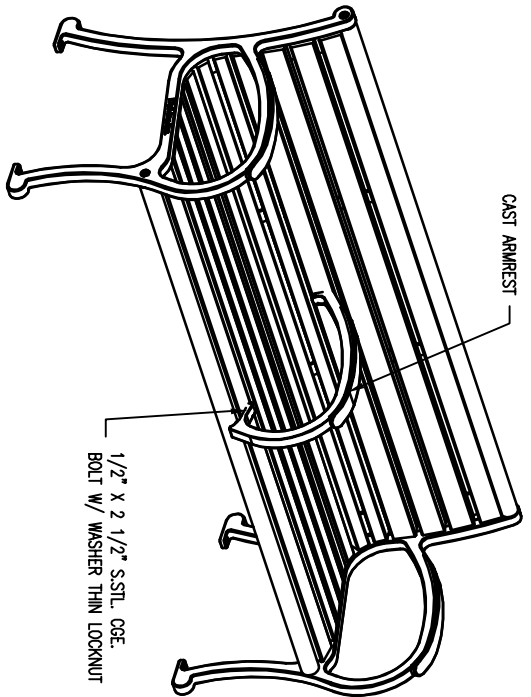


SEAT FRAME  
BOLTING DETAIL



- LENGTH OPTIONS**
- 6' BENCH
  - 8' BENCH
- NOTES**
- 1.) ALL STL. MEMBERS COATED W/ ZINC RICH EPOXY THEN FINISHED W/ POLYESTER POWDER COATING.
  - 2.) 1/2" X 3 3/4" EXPANSION ANCHOR BOLTS PROVIDED.

- SLAT OPTIONS**
- "CEDAR" RECYCLED PLASTIC
  - "GREY" RECYCLED PLASTIC
  - "REDWOOD" RECYCLED PLASTIC
  - "WALNUT" RECYCLED PLASTIC
  - OTHER \_\_\_\_\_



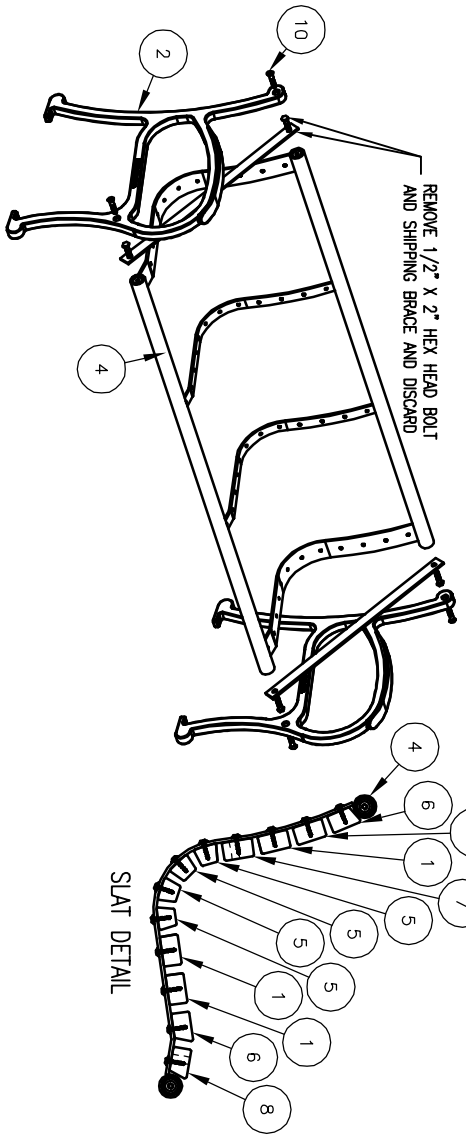
165 SERPL-3AR

DATE DRAWN : 05/07/07
DRAWN BY : AMH
DATE REV. : 00/00/00
REV. BY : XXX

REV. A  
DRAWING NUMBER

165 SERPL-3AR

**1** ATTACH SEAT FRAME TO SUPPORTS.



**PARTS LIST**

ITEM	QTY	PART NO	DESCRIPTION
1	4	0-143-60PL-01	2" X 3" X 71" INTR SLAT, PLASTIC
2	2	0-160-00-01	CAST IRON BENCH SUPPORT FOR BACKREST
3	1	0-160-00-03	CAST IRON ARM REST
4	1	0-165-60-01	6" SEAT FRAME
5	4	0-165-60PL-03	71" TRAP SLAT, PLASTIC
6	2	0-165-60PL-04	71" BMD SLAT, PLASTIC
7	1	0-165-60PL-32	2" X 3" X 71" SLAT, FOR CENTER ARM, PLASTIC
8	1	0-165-60PL-34	71" BMD SLAT, FOR CENTER ARM, PLASTIC
9	2	1-11-045	1/2" X 2 1/2" SS COE BOLT
10	4	1-12-065	1/2" X 2 1/2" FLT SKT HD CAP SCR
11	48	1-13-023	5/16" X 1 1/2" SS BIN SKT HD LAG
12	2	1-20-018	1/2" SS THIN NTGN LOCKNUT
13	2	1-22-015	1/2" SS FLAT WASHER
14	48	1-22-017	5/16" SS FLAT WASHER

**KITS PROVIDED**

ITEM	QTY	PART NO	DESCRIPTION
15	1	K-ANCD9860-4	1/2" X 3 3/4" SS ANCHOR KIT (4PC)
16	2	K-BL0524-24	5/16" LAG HARDWARE KIT (24PC)
17	1	K-CG0840-2TL	1/2" COE BOLT HARDWARE KIT (2PC)
18	1	K-FC0840-4	1/2" CAP HARDWARE KIT (4 PCS)

**NOTES:**

- 1.) DURING ASSEMBLY PROCEDURE: DO NOT COMPLETELY TIGHTEN HARDWARE.
- 2.) THE ACTUAL PARTS WILL NOT BE NUMBERED. NUMBERS ONLY APPLY TO DRAWING.
- 3.) UPON COMPLETION OF ASSEMBLY SQUARE ALL COMPONENTS THEN TIGHTEN ALL HARDWARE.
- 4.) MOUNT AND ANCHOR AS SPECIFIED.

**TOOLS REQ'D**

- 3/4" WRENCH
- 5/16" ALLEN WRENCH
- 1/4" ALLEN WRENCH
- 1/2" MASONRY DRILL BIT
- DRILL
- RATCHET STRAP (PROVIDED)

**1A**



PLACE SEAT ASSEMBLY ON WORK SURFACE ALLOWING ACCESS TO ENDS. PLACE RATCHET STRAP AROUND SEAT ASSEMBLY AS SHOWN ABOVE.

**1B**



TIGHTEN STRAP UNTIL SHIPPING BRACKET BECOMES LOOSE. THEN REMOVE AND DISCARD BOLTS & SHIPPING BRACKET.

**1C**



ATTACH CAST SUPPORT TO SEAT ASSEMBLY. IF HOLES IN CASTING DO NOT ALIGN WITH THE SEAT ASSEMBLY, ADJUST BY USING THE RATCHET STRAP.

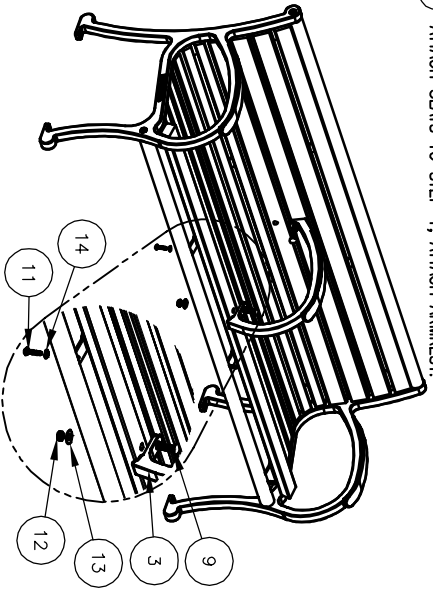
**1D**



TIGHTEN HARDWARE THEN REMOVE RATCHET STRAP AND REPEAT THIS PROCEDURE ON THE OTHER END OF BENCH.

**2**

ATTACH SLATS TO STEP 1, ATTACH ARMREST.



**ASSEMBLY INSTRUCTIONS**

DATE DRAWN :	09/18/08
DRAWN BY :	ESS
DATE REV. :	00/00/00
REV. BY :	XXX

REV. A

DRAWING NUMBER

165 SERPL-3AR

SHEET 2 OF 2