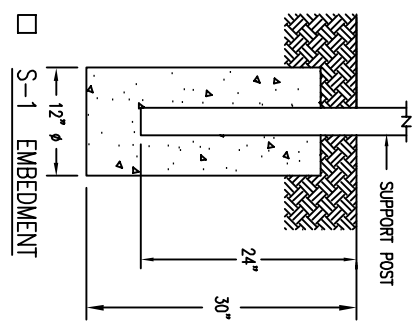
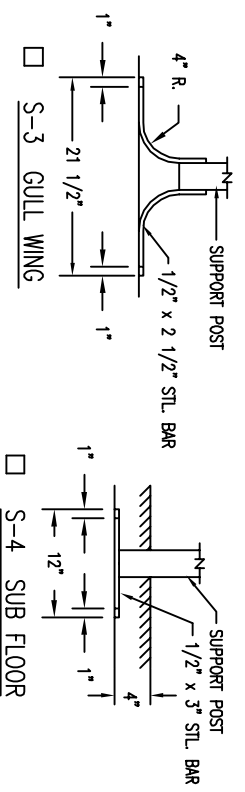
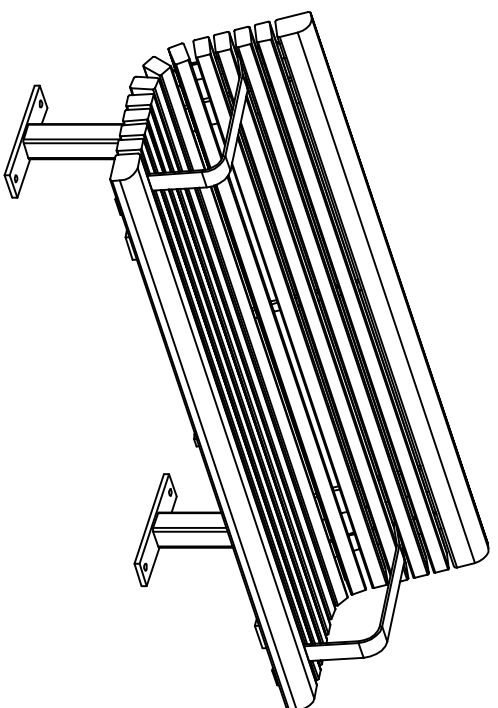


- LENGTH OPTIONS**
- 6' BENCH
  - 8' BENCH



- NOTES**
- 1.) ALL STL. MEMBERS COATED W/ ZINC RICH EPOXY THEN FINISHED W/ POLYESTER POWDER COATING.
  - 2.) ALL WOOD MEMBERS TREATED W/ CLEAR PRESERVATIVE.
  - 3.) 1/2" X 3 3/4" EXPANSION BOLT PROVIDED FOR S-2, S-3 & S-4 OPTIONS.

- WOOD OPTIONS**
- 'C' & BTR. DOUGLAS FIR KD S4S EE
  - CLEAR IPE S4S EE
  - OTHER



BENCH

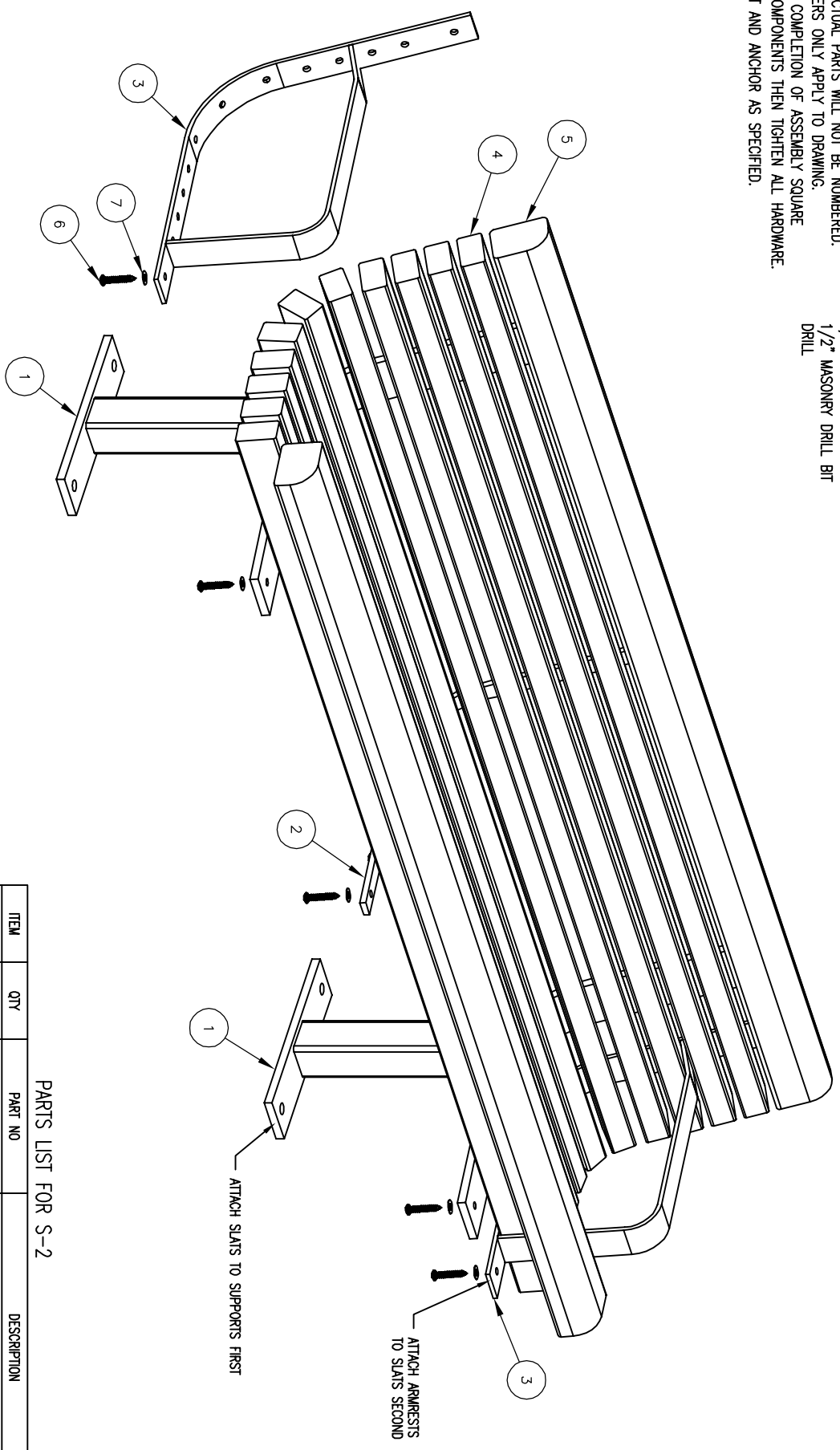
DATE DRAWN : 08/23/93	REV.
DRAWN BY : HD	B
DATE REV. : 05/16/10	
REV. BY : ESS	

DRAWING NUMBER

39 SERIES-2AR

- NOTES:**
- 1.) DURING ASSEMBLY PROCEDURE; DO NOT COMPLETELY TIGHTEN HARDWARE.
  - 2.) THE ACTUAL PARTS WILL NOT BE NUMBERED. NUMBERS ONLY APPLY TO DRAWING.
  - 3.) UPON COMPLETION OF ASSEMBLY SQUARE ALL COMPONENTS THEN TIGHTEN ALL HARDWARE.
  - 4.) MOUNT AND ANCHOR AS SPECIFIED.

- TOOLS REQ'D**
- 3/4" WRENCH
  - 1/4" ALLEN WRENCH
  - 1/2" MASONRY DRILL BIT
  - DRILL



PARTS LIST FOR S-2

ITEM	QTY	PART NO	DESCRIPTION
1	2	0-39-00-03/S-2	SUPPORT FOR SURFACE MT
2	1	0-39-00-04	CONTOUR STRAP
3	2	0-39-00AR-06	CONTOUR STRAP W/ ARMREST
4	11	0-39-60-01	2" X 3" X 71" WOOD SLAT
5	2	0-39-60-02	3" X 4" X 71" WOOD EDGE SLAT
6	65	1-13-016	3/8" X 2" SS BTN SKT HD LAG SCR
7	65	1-22-024	3/8" SS FLAT WASHER

KITS PROVIDED FOR S-2

ITEM	QTY	PART NO	DESCRIPTION
8	1	K-ANCO860-4	1/2" X 3 3/4" SS ANCHOR KIT (4PC)
9	1	K-BL0632-65	3/8" LAG HARDWARE KIT (65PC)



ASSEMBLY INSTRUCTIONS

DATE DRAWN : 05/16/10	REV.
DRAWN BY : ESS	A
DATE REV. : 00/00/00	
REV. BY : XXX	