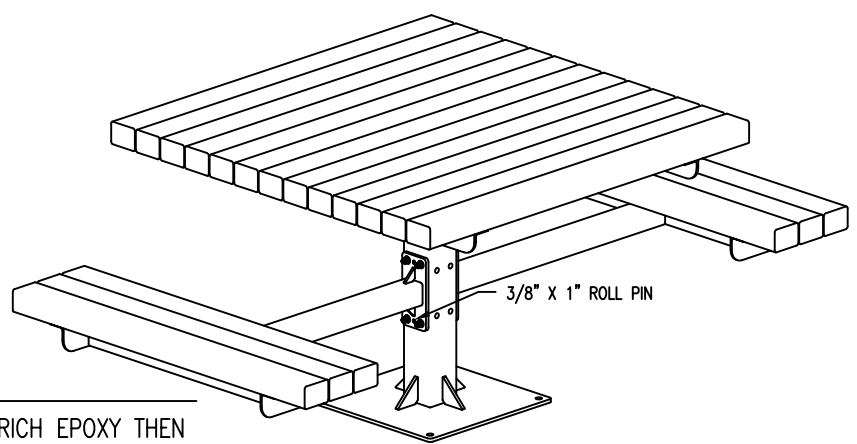


WOOD OPTIONS

- IPE S4S EE
- 'C' & BTR. DOUGLAS FIR KD S4S EE
- OTHER _____


NOTES

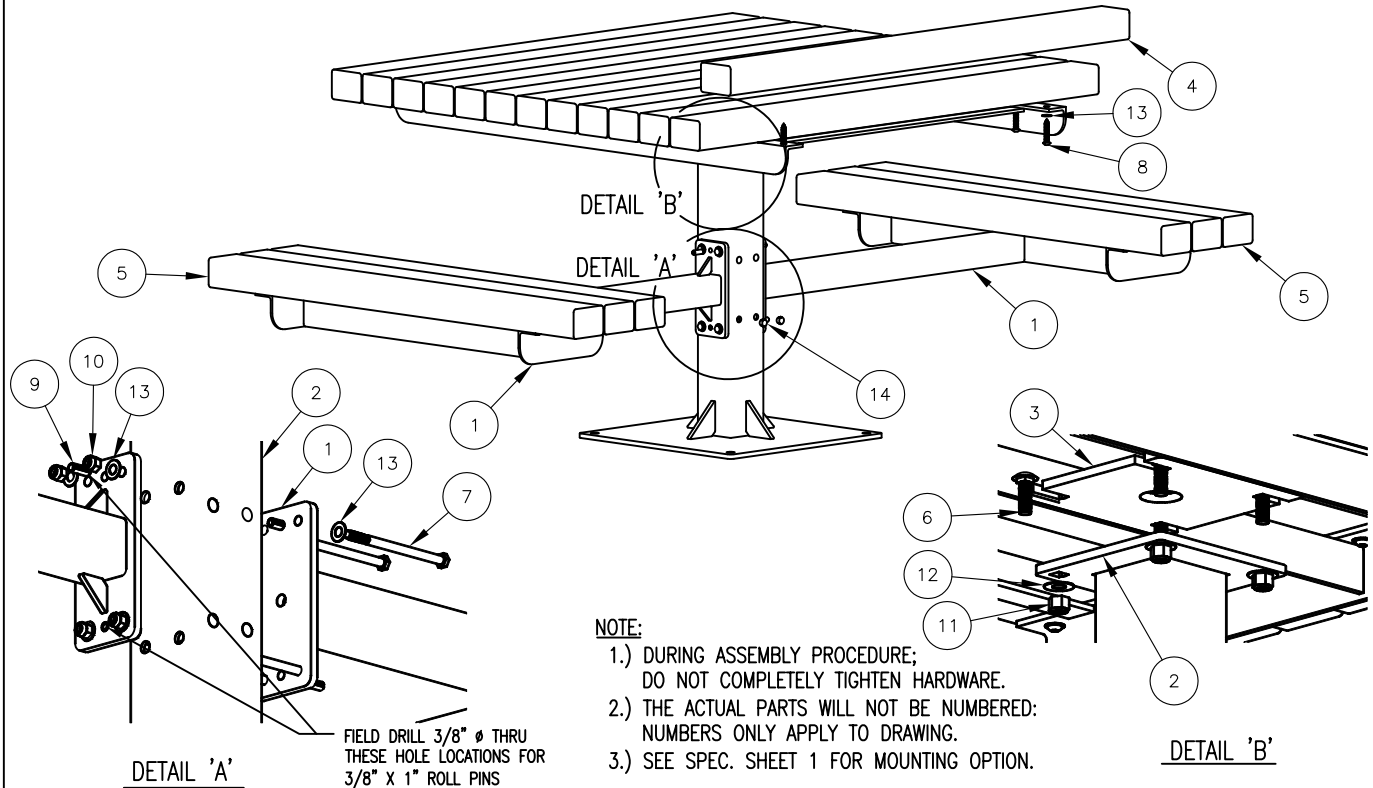
- 1.) ALL STL. MEMBERS COATED W/ ZINC RICH EPOXY THEN FINISHED W/ POLYESTER POWDER COATING.
 - 2.) ALL WOOD MEMBERS TREATED W/ CLEAR PRESERVATIVE.
 - 3.) 1/2" X 3 3/4" EXPANSION ANCHOR BOLTS FOR OPTIONS S-2 AND S-4.
 - 4.) USE 3/8" X 2" S.STL. BUTTON SOCKET HEAD LAG SCREWS FOR 3" X 4" & 4" X 4" SLATS. USE 3/8" X 1 1/2" S.STL. HEX HD LAG SCREWS FOR 2" X 4" SLATS.
- * UPCHARGE APPLIES TO SUPPORT OPTION, CONSULT YOUR LOCAL REPRESENTATIVE.



W/ 2 SEATS

- 76-22 (2" x 4")
- 76-32 (3" x 4")
- 76-42 (4" x 4")

 DuMor, inc. P.O. Box 142 Mifflintown, PA 17059-0142	SCALE : NONE	TITLE : PEDESTAL TABLE	
	DATE DRAWN : 1/8/00	REV. J	DRAWING NUMBER 76 SERIES-2
	DRAWN BY : JSB		
	DATE REV. : 12/09/11		
REV. BY : RDH	SHEET 1 OF 2		



STEP 1:

- USE 1 - PC. CTR. POST FOR SURFACE MOUNT, (2)
 - 1 - PC. TABLE TOP FRAME (3)
 - 4 - PCS. 1/2" X 1 1/2" SS. CGE. BOLT (6)
 - 4 - PCS. 1/2" SS. NYLON LOCK NUT (11)
 - 4 - PCS. 1/2" SS. FLAT WASHER (12)
- ATTACH TABLE TOP FRAME (3) TO CTR. POST FOR SURFACE MOUNT, (2) USING HARDWARE (6, 11, & 12). TIGHTEN TO SNUG FIT.

STEP 2:

- USE 2 - PCS. SEAT SUPPORT ARM W/ 8" PLATE (1)
 - 4 - PCS. 3/8" X 5 1/2" SS. HEX HD. CAP SCR. (7)
 - 4 - PCS. 3/8" SS. NYLON LOCK NUT (10)
 - 8 - PCS. 3/8" SS. FLAT WASHER (13)
- ATTACH SEAT SUPPORT ARM W/ 8" PLATE (1) TO STEP 1 ASSEMBLY USING HARDWARE (7, 10, & 13). TIGHTEN TO SNUG FIT.

STEP 3:

- USE 13 - PCS. 3" X 4" X 47" WOOD TABLE SLAT (4)
 - 6 - PCS. 3" X 4" X 43" WOOD SEAT SLAT (5)
 - 38 - PCS. 3/8" X 2" SS. BTN. SKT. HD. LAG SCR. (8)
 - 38 - PCS. 3/8" SS. FLAT WASHER (13)
- ATTACH 3" X 4" X 47" TABLE SLATS (4) AND 3" X 4" X 43" SEAT SLATS (5) TO STEP 2 ASSEMBLY USING HARDWARE (8 & 13). TIGHTEN TO SNUG FIT. REPEAT UNTIL ALL SLATS ARE ATTACHED.

STEP 4:

- USE 8 - PCS. BLACK PLASTIC PLUG (14)
- INSERT BLACK PLASTIC PLUG INTO REMAINING HOLES.

STEP 5:

- UPON COMPLETION OF TABLE ASSEMBLY SQUARE ALL COMPONENTS THEN TIGHTEN ALL HARDWARE.

STEP 6:

- MOUNT AND ANCHOR AS SPECIFIED.

STEP 7:

- USE 4 - PCS. 3/8" X 1" S.STL. ROLL PIN (9)
- BE SURE SEAT IS LEVEL. FIELD DRILL CTR POST FOR SURFACE MOUNT (2) WITH 3/8" DRILL BIT AT SEAT SUPPORT ARM W/ 8" PLATE (1) OPEN HOLE LOCATIONS. SEE DETAILS 'A' AND 'B'. DRIVE IN 3/8" X 1" ROLL PIN (9).

ITEM	QTY	PART NO	DESCRIPTION
1	2	0-76-00-05	SEAT SUPPORT ARM W/8" PLATE
2	1	0-76-00-06/S-2	CTR POST FOR SURFACE MOUNT
3	1	0-76-00-07	STL TABLE TOP FRAME
4	13	0-76-30-01	3" X 4" X 47" WOOD SLAT
5	6	0-76-30-02	3" X 4" X 43" WOOD SLAT
6	4	1-11-042	1/2" X 1 1/2" SS CGE BOLT
7	4	1-12-039	3/8" X 5 1/2" SS HEX HD CAP SCR
8	38	1-13-016	3/8" X 2" SS BTN SKT HD LAG SCR
9	4	1-14-003	3/8" X 1" S.STL. ROLL PIN
10	4	1-20-007	3/8" SS NYLON LOCKNUT
11	4	1-20-015	1/2" SS NYLON LOCKNUT
12	4	1-22-015	1/2" SS FLAT WASHER
13	46	1-22-024	3/8" SS FLAT WASHER
14	8	5-48-059	BLACK PLASTIC PLUG

DuMor, inc.
P.O. Box 142 Mifflintown, PA 17059-0142

SCALE : NONE
DATE DRAWN : 1/8/00
DRAWN BY : JSB
DATE REV. : 12/09/11
REV. BY : ESS

TITLE : PEDESTAL TABLE ASSEMBLY

REV. J DRAWING NUMBER 76 SERIES-2 SHEET 2 OF 2