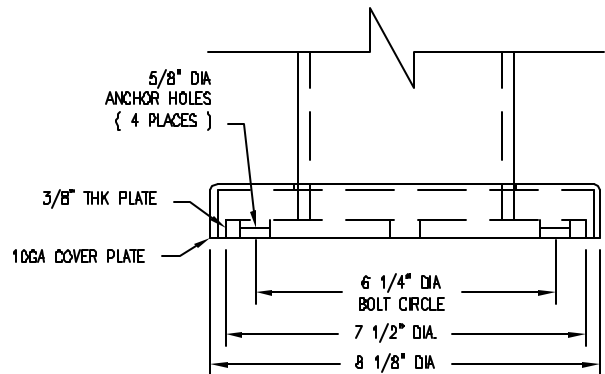
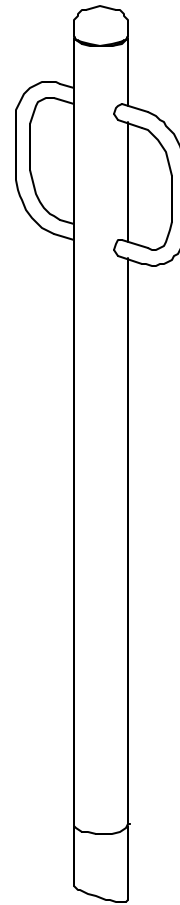


S-1 EMBEDDED



S-2 SURFACE MT

NOTES

- 1.) STL MEMBERS COATED W/ ZINC RICH EPOXY THEN FINISHED W/ POLYESTER POWDER COATING.
- 2.) 1/2" X 3 3/4" EXPANSION ANCHOR BOLTS PROVIDED FOR S-2 OPTION.

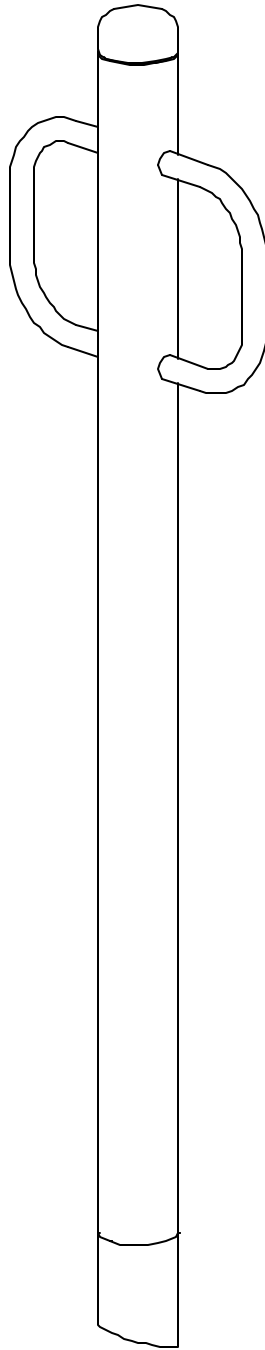


DuMor, inc.

P.O. Box 142 Mifflintown, PA 17059-0142

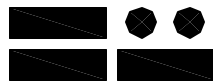
SCALE : NONE
 DATE DRAWN : 10/26/05
 DRAWN BY : AWH
 DATE REV. : 01/19/07
 REV. BY : ESS

TITLE :		BOLLARD	
REV.	DRAWING NUMBER	401-42-2	SHEET
B			1 OF 2



NOTE:

1. MOUNT AND ANCHOR AS SPECIFIED.



DuMor, inc.

P.O. Box 142 Mifflintown, PA 17059-0142

SCALE :	NONE
DATE DRAWN :	10/26/05
DRAWN BY :	AWH
DATE REV. :	01/19/07
REV. BY :	ESS

TITLE :	BOLLARD		
REV.	DRAWING NUMBER		SHEET
B	401-42-2		2 OF 2