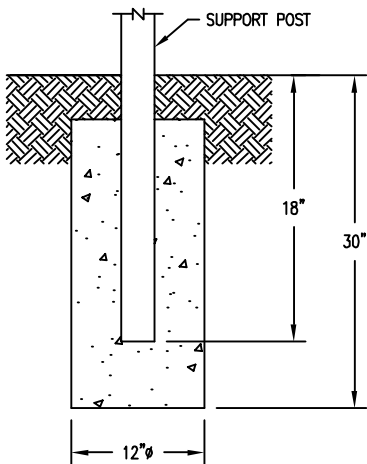
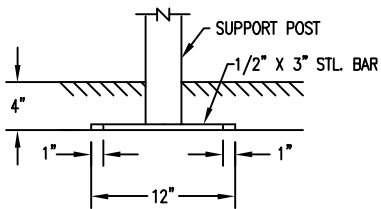


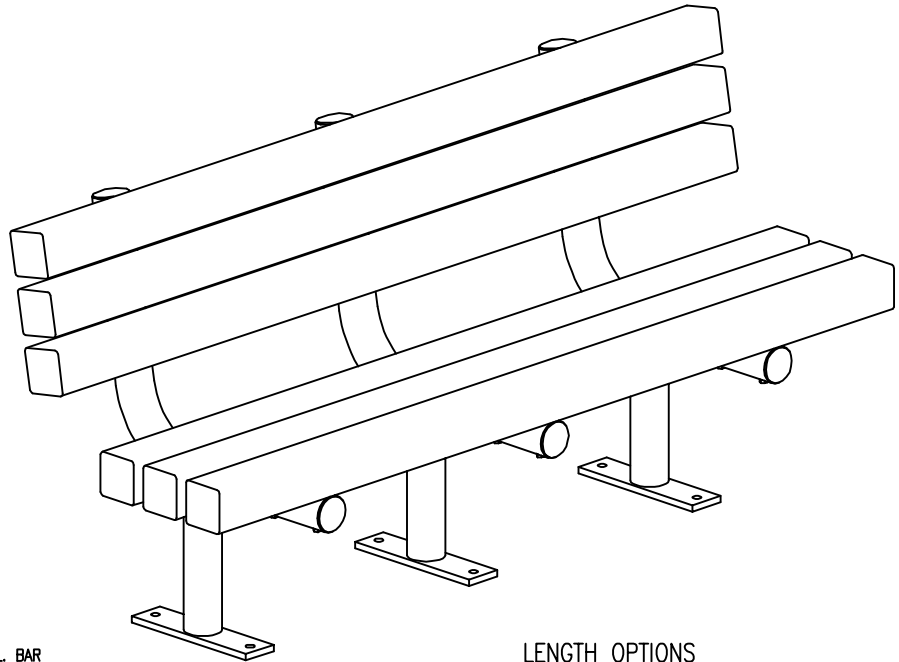
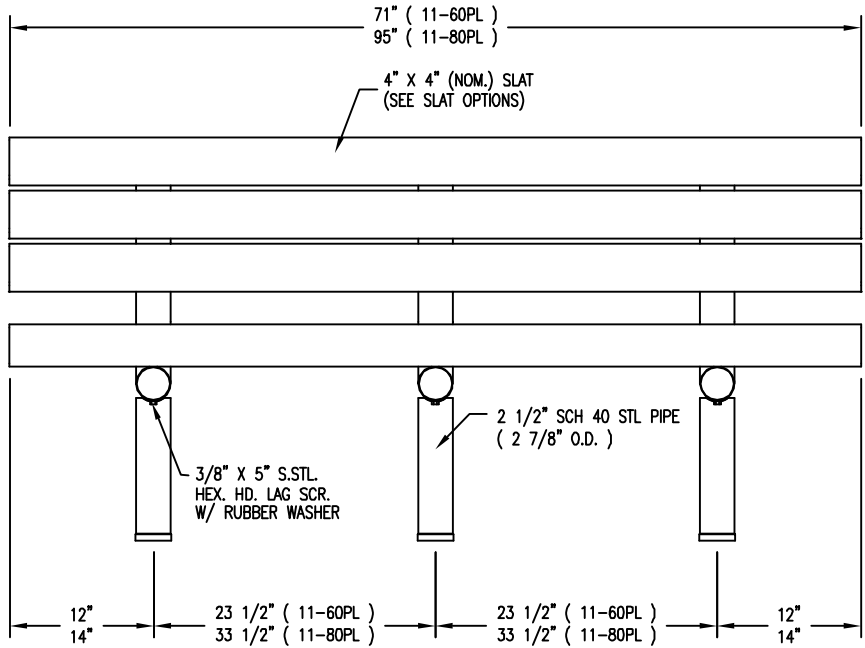
S-2 SURFACE MOUNT



S-1 EMBEDMENT



S-4 SUB FLOOR



LENGTH OPTIONS

- 6' BENCH
- 8' BENCH

SLAT OPTIONS

- "CEDAR" RECYCLED PLASTIC
- "GREY" RECYCLED PLASTIC
- "REDWOOD" RECYCLED PLASTIC
- "WALNUT" RECYCLED PLASTIC
- OTHER \_\_\_\_\_

NOTES

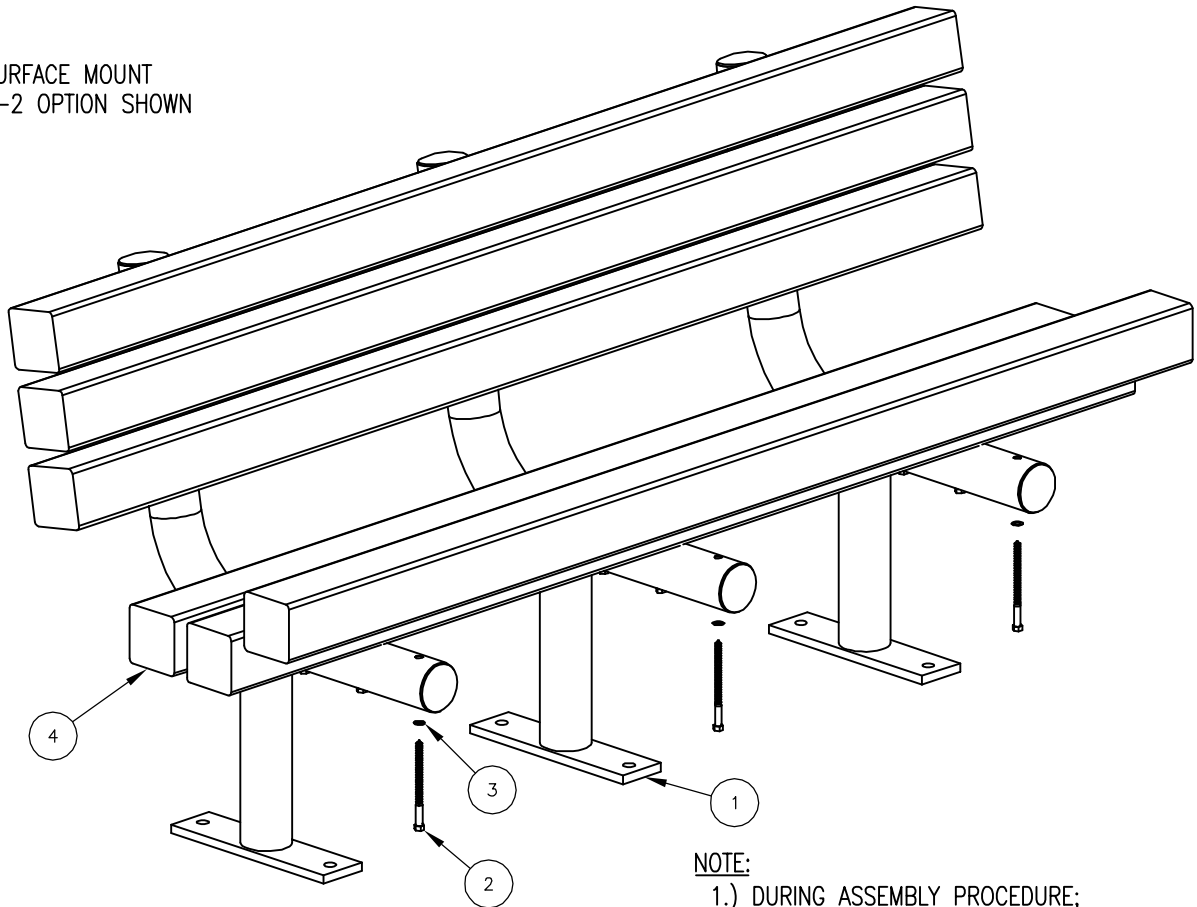
- 1.) ALL STL. MEMBERS COATED W/ ZINC RICH EPOXY THEN FINISHED W/ POLYESTER POWDER COATING.
- 2.) 1/2" X 3 3/4" EXPANSION ANCHOR BOLTS PROVIDED FOR S-2 AND S-4 OPTIONS.

  
**DuMor, inc.**  
 P.O. Box 142 Mifflintown, PA 17059-0142

SCALE : NONE  
 DATE DRAWN : 3/22/94  
 DRAWN BY : AH  
 DATE REV. : 10/25/11  
 REV. BY : RDH

TITLE : BENCH		DRAWING NUMBER : 11 SERIES PL	SHEET : 1 OF 2
REV. : D			

SURFACE MOUNT  
S-2 OPTION SHOWN



**NOTE:**

- 1.) DURING ASSEMBLY PROCEDURE;  
DO NOT COMPLETELY TIGHTEN HARDWARE.
- 2.) THE ACTUAL PARTS WILL NOT BE NUMBERED:  
NUMBERS ONLY APPLY TO DRAWING.
- 3.) SEE SPEC. SHEET 1 FOR MOUNTING OPTIONS.

**STEP 1:**

- USE 3 – PC. SUPPORT POST ( 1 )
- 18 – PCS. 3/8" X 5" SS. HEX HD. LAG SCR. ( 2 )
- 18 – PCS. 3/8" ID. X 5/8" OD. RUBBER WASHER ( 3 )
- 6 – PC. 4" X 4" X 71" PLASTIC SLAT ( 4 )

ATTACH ONE PLASTIC SLAT ( 4 ) TO THREE SUPPORT POSTS ( 1 ) USING HARDWARE ( 2 & 3 ). TIGHTEN TO SNUG FIT. REPEAT UNTIL ALL PLASTIC SLATS ARE ATTACHED TO SUPPORT POSTS.

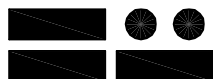
**STEP 2:**

UPON COMPLETION OF BENCH ASSEMBLY SQUARE ALL COMPONENTS THEN TIGHTEN ALL HARDWARE.

**STEP 3:**

ANCHOR ACCORDING TO SUPPORT OPTION USED.

ITEM	QTY	PART NO	DESCRIPTION
1	3	0-56-00-02/S-2	SUPPORT POST FOR SURFACE MOUNT
2	18	1-13-019	3/8" X 5" SS HEX HD LAG SCR
3	18	1-22-018	3/8" ID X 5/8" OD RUBBER WASHER
4	6	0-11-60PL-02	4" X 4" X 71" PLASTIC SLAT



**DuMor, inc.**

P.O. Box 142 Mifflintown, PA 17059-0142

SCALE : NONE  
DATE DRAWN : 3/22/94  
DRAWN BY : AH  
DATE REV. : 10/25/11  
REV. BY : RDH

TITLE : BENCH  
REV. D DRAWING NUMBER 11 SERIES PL SHEET 2 OF 2