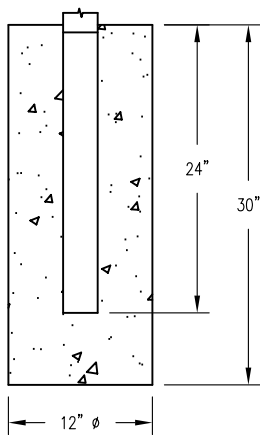


* S-2 SURFACE MOUNT *
(SEE NOTES)



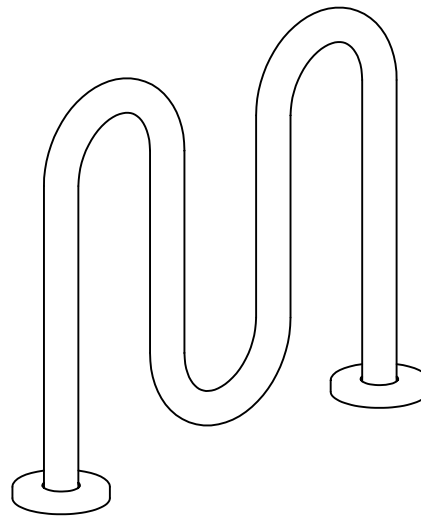
S-1 EMBEDMENT

FINISH OPTIONS

- HOT DIPPED GALVANIZED (VISIBLE VENT HOLES)
- COATED W/ ZINC RICH EPOXY THEN FINISHED W/ POLYESTER POWDER COATING.

NOTES:

- 1.) 1/2" X 3 3/4" EXPANSION ANCHOR BOLTS PROVIDED FOR OPTION S-2.
 - 2.) PLUGS PROVIDED FOR VISIBLE VENT HOLES. (HOT DIPPED GALV. ONLY)
- * UPCHARGE APPLIES TO SUPPORT OPTION - CONSULT YOUR LOCAL REPRESENTATIVE.

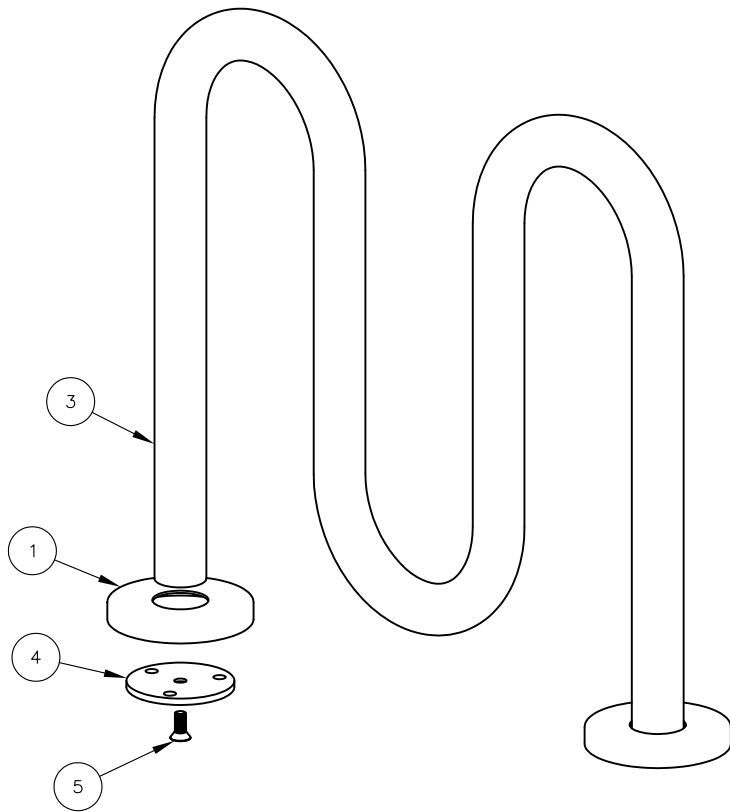



DuMor, inc.
P.O. Box 142 Mifflintown, PA 17059-0142

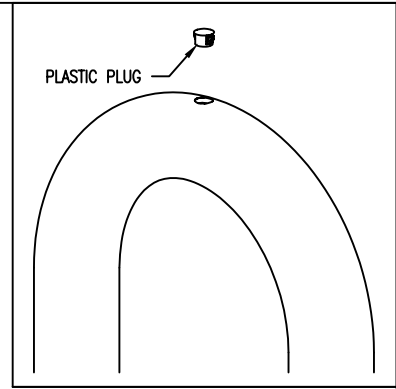
SCALE : NONE
DATE DRAWN : 1/12/11
DRAWN BY : JSB
DATE REV. : 2/28/12
REV. BY : JSB

TITLE : BIKE RACK

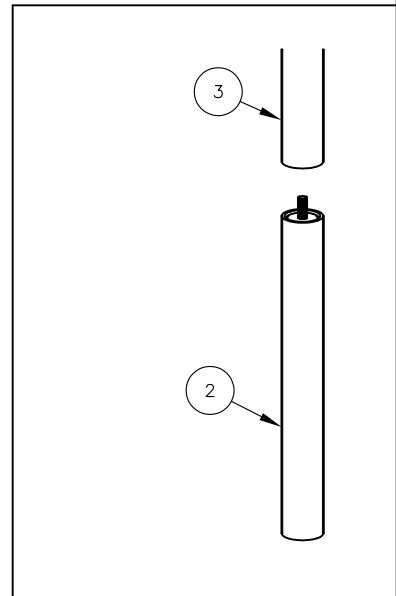
REV. B	DRAWING NUMBER 125-20	SHEET 1 OF 2
--------	-----------------------	--------------



S-2 SURFACE MOUNT OPTION



HOT-DIPPED GALV. BIKE RACK ONLY



S-1 EMBEDMENT OPTION

INSTALLATION FOR SURFACE MOUNT

STEP 1:

- USE 1 - PC. BIKE LOOP, SURFACE MOUNT (3)
 - 2 - PCS. 3/8" THK SURFACE MOUNT PLATE (4)
 - 2 - PCS. 10 GA X 8" DIA ANCHOR PLATE COVER (1)
 - 2 - PCS. 5/8" X 1 1/2" SS FLT SKT HD CAP SCREW (5)
- SLIDE 10 GA X 8" DIA ANCHOR COVER (1) OVER BIKE LOOP, SURFACE MOUNT (3) LEGS. ATTACH 3/8" THK. SURFACE MOUNT PLATE (4) TO BIKE LOOP, SURFACE MOUNT (3) USING HARDWARE (5).

STEP 2:

ANCHOR ACCORDINGLY.

INSTALLATION FOR PLASTIC PLUG HOT-DIPPED GALV ONLY

INSERT PLASTIC PLUG INTO HOLE ON TOP OF EACH LOOP

(S-2 OPTION)

(S-1 OPTION)

(S-2 OPTION)

(S-2 OPTION)

ITEM	QTY	PART NO	DESCRIPTION
1	2	0-125-04	10 GA X 8" DIA STL COVER W/ 3 1/8" DIA HOLE
2	2	0-125-09/S-1	EMBEDMENT EXTENSION
3	1	0-125-20/S-2	2-PEAK LOOP BIKE RACK FOR SURF MT
4	2	0-83-00-03	3/8" THK SURFACE MOUNT PLATE
5	2	1-12-102	5/8" X 1 1/2" SS FLT SKT HD CAP SCR

DuMor, inc.
P.O. Box 142 Mifflintown, PA 17059-0142

SCALE : NONE
DATE DRAWN : 1/12/11
DRAWN BY : JSB
DATE REV. : 2/28/12
REV. BY : JSB

TITLE : BIKE RACK ASSEMBLY

REV. B	DRAWING NUMBER 125-20	SHEET 2 OF 2
--------	-----------------------	--------------