

WOOD OPTIONS

- 'C' & BTR. DOUGLAS FIR KD S4S EE
- IPE S4S EE
- OTHER _____

NOTES

- 1.) ALL STL. MEMBERS COATED W/ ZINC RICH EPOXY THEN FINISHED W/ POLYESTER POWDER COATING.
- 3.) 1/2" X 3 3/4" EXPANSION ANCHOR BOLTS PROVIDED.



TABLE

DATE DRAWN : 08/26/13
 DRAWN BY : ESS
 DATE REV. : 10/14/15
 REV. BY : JSB

REV.
B

DRAWING
NUMBER

464-60

SHEET
1 OF 2

PARTS LIST

ITEM	QTY	PART NO	DESCRIPTION
1	6	0-460-00-02	CONTOUR STRAP
2	6	0-460-60-03	71 3/4" ALUM EXTRUSION
3	2	0-464-00-01	TABLE SUPPORT
4	3	0-464-00-02	TABLE CONTOUR STRAP
5	14	0-57-60-01	2" X 3" X 71" WOOD INT'R SLAT
6	12	1-12-053	5/16" X 1 1/2" SS BTN SKT HD CAP SCR
7	42	1-13-023	5/16" X 1 1/2" SS BTN SKT HD LAG
8	42	1-22-017	5/16" SS FLAT WASHER

KITS PROVIDED

ITEM	QTY	PART NO	DESCRIPTION
9	1	K-ANCO860-4	1/2" X 3 3/4" SS ANCHOR KIT (4PC)
10	2	K-BC0524-6	5/16" CAP HARDWARE KIT (6PC)
11	1	K-BL0524-42	5/16" LAG HARDWARE KIT (42PC)

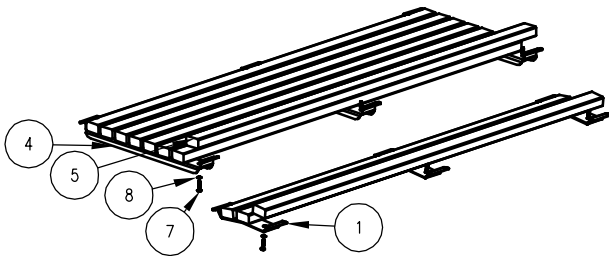
NOTE:

- 1.) DURING ASSEMBLY PROCEDURE; DO NOT COMPLETELY TIGHTEN HARDWARE.
- 2.) THE ACTUAL PARTS WILL NOT BE NUMBERED. NUMBERS ONLY APPLY TO DRAWING.
- 3.) UPON COMPLETION OF ASSEMBLY SQUARE ALL COMPONENTS THEN TIGHTEN ALL HARDWARE.
- 4.) MOUNT AND ANCHOR AS SPECIFIED.

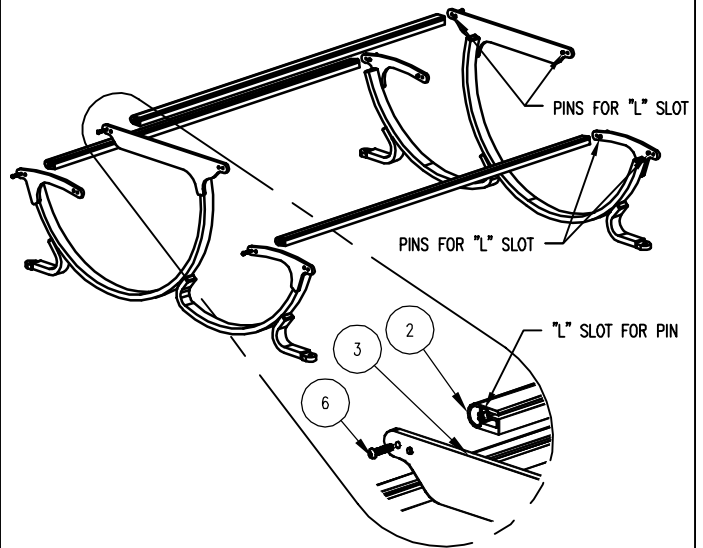
TOOLS REQ'D

- 3/4" WRENCH
 1/4" ALLEN WRENCH
 3/16" ALLEN WRENCH
 1/2" MASONRY DRILL BIT
 DRILL

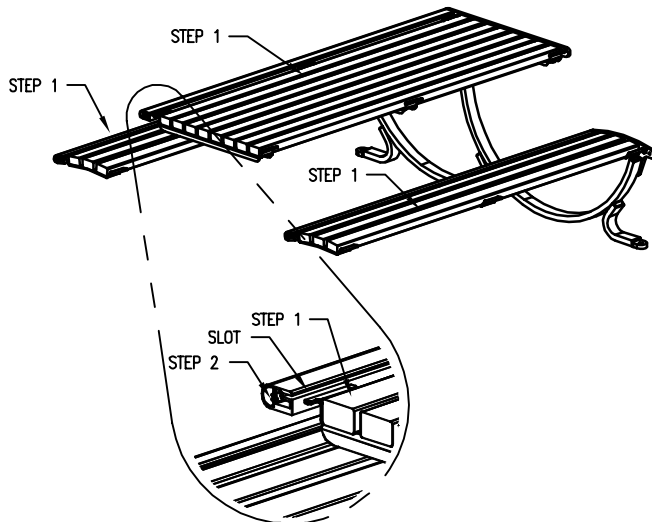
1 ATTACH SLATS TO CONTOUR STRAPS.



2 ATTACH 3 ALUM. EXTRUSIONS AS SHOWN, TO LEFT & RIGHT TABLE SUPPORTS, ENSURE PINS ARE IN "L" SLOTS.



3 INSERT STEP 1 INTO STEP 2, USING SLOTS ON ALUM. EXTRUSION.
 NOTE: RIGHT TABLE SUPPORT NOT SHOWN FOR CLARITY.



4 ATTACH 3 REMAINING ALUM. EXTRUSIONS TO SUPPORTS, AS IN STEP 2.

