

S-2 SURFACE

S-3 GULL WING

S-4 SUB FLOOR

LENGTH OPTIONS

- 6' BENCH
- 8' BENCH

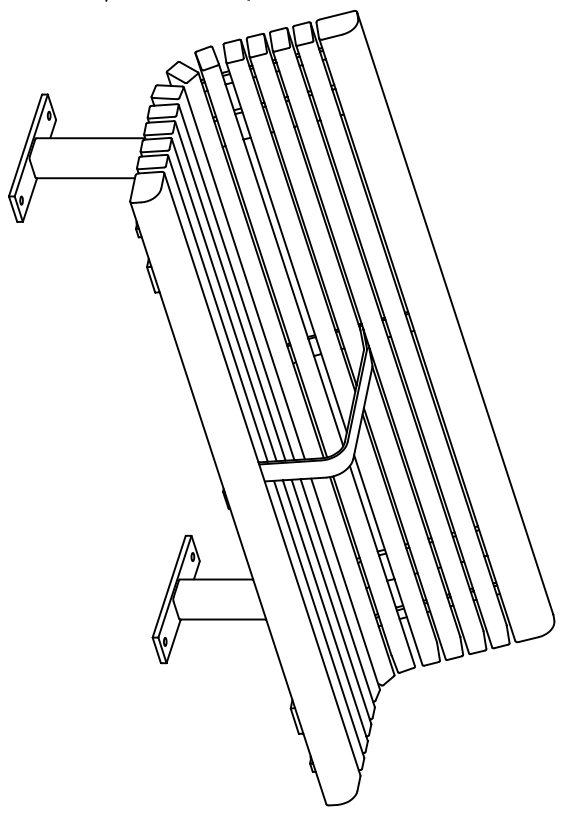
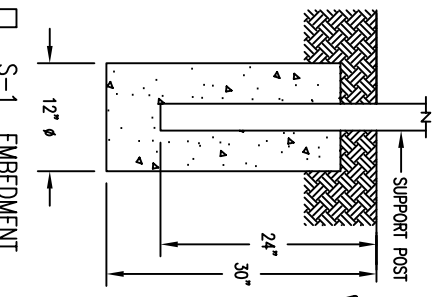
WOOD OPTIONS

- CLEAR ALL HEART REDWOOD S4S EE
- 'C' & BTR. DOUGLAS FIR KD S4S EE
- OTHER _____

NOTES

- 1.) ALL STL. MEMBERS COATED W/ ZINC RICH EPOXY THEN FINISHED W/ POLYESTER POWDER COATING.
- 2.) ALL WOOD MEMBERS TREATED W/ CLEAR PRESERVATIVE.
- 3.) 1/2" x 3 3/4" EXPANSION BOLTS PROVIDED FOR S-2, S-3 & S-4 OPTIONS.

S-1 EMBEDMENT



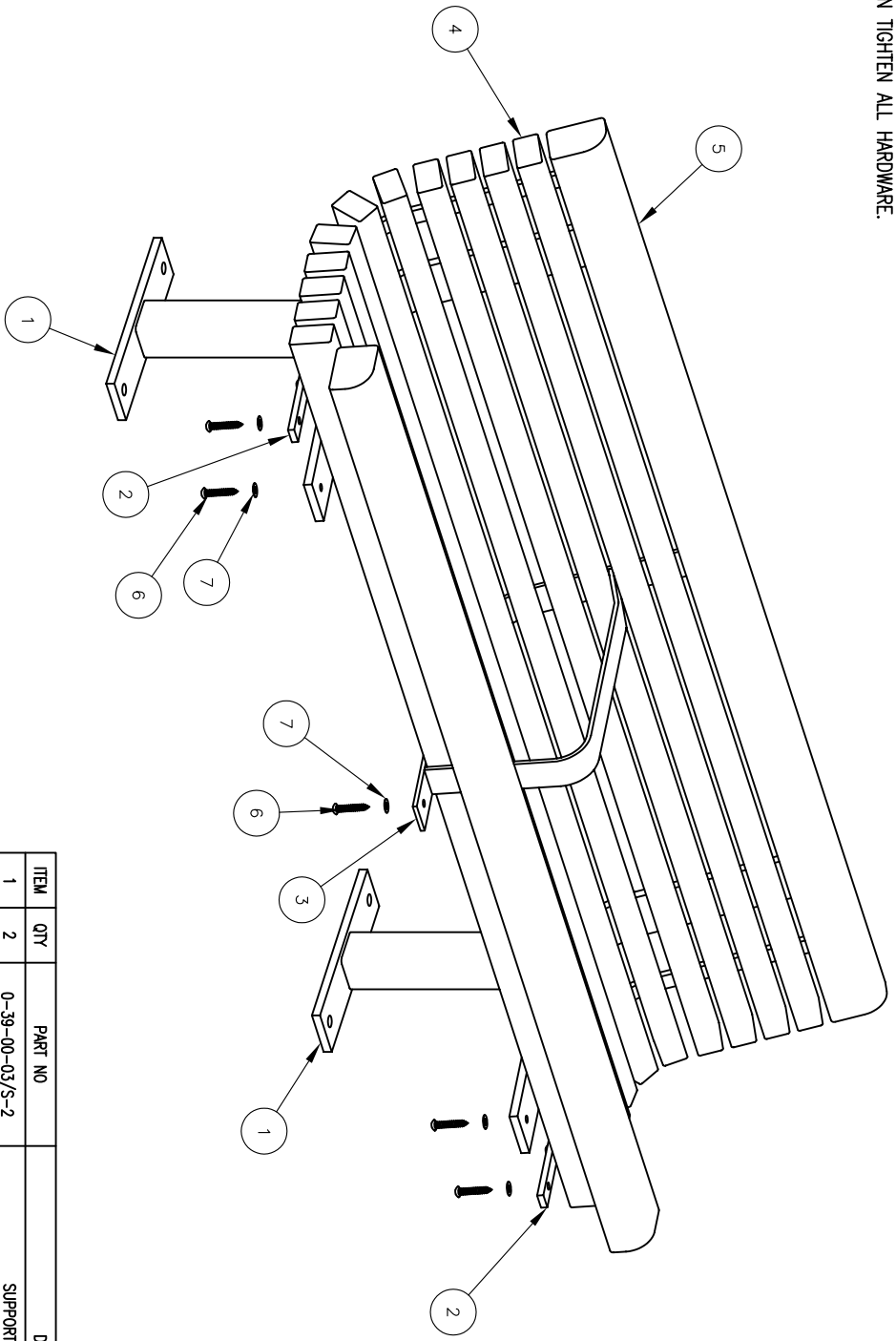
DUMOR, inc.
P.O. Box 142 Mifflintown, PA 17059-0142



DATE DRAWN : 3/31/04
DRAWN BY : JSB
DATE REV. :
REV. BY :

TITLE	BENCH
REVISION	A
DRAWING NUMBER	39 SERIES-1AR SH1

- NOTES:**
- 1.) DURING ASSEMBLY DO NOT COMPLETELY TIGHTEN HARDWARE.
 - 2.) THE ACTUAL PARTS WILL NOT BE NUMBERED, NUMBERS ONLY APPLY TO DRAWING.
 - 3.) UPON COMPLETION OF BENCH ASSEMBLY, SQUARE ALL COMPONENTS THEN TIGHTEN ALL HARDWARE.



KITS REQUIRED

ITEM	QTY	PART NO	DESCRIPTION
8	1	K-ANCO860-4	1/2" X 3 3/4" SS ANCHOR KIT (4PC)
9	1	K-BL0632-65	3/8" LAG HARDWARE KIT (65PC)

ITEM	QTY	PART NO	DESCRIPTION
1	2	0-39-00-03/S-2	SUPPORT FOR SURFACE MT
2	2	0-39-00-04	CONTOUR STRAP
3	1	0-39-00AR-06	CONTOUR STRAP W/ ARMREST
4	11	0-39-60-01	2" X 3" X 71" WOOD SLAT
5	2	0-39-60-02	3" X 4" X 71" WOOD EDGE SLAT
6	65	1-13-016	3/8" X 2" SS BTN SKT HD LAG SCR
7	65	1-22-024	3/8" SS FLAT WASHER

DUMOR, inc.

P.O. Box 142 Mifflintown, PA 17059-0142

TOOLS REQ'D
3/4" WRENCH
1/4" ALLEN WRENCH
DRILL & 1/2" MASONRY DRILL BIT

DATE DRAWN : 2/23/09
DRAWN BY : JSB

DATE REV. :
REV. BY :

TITLE: **BENCH DETAIL**

REVISION: **A** DRAWING NUMBER: **39 SERIES-1AR SH2**